

# WESTFIELD NORTH LAKES Community Plan 2022

## Our Community Vision

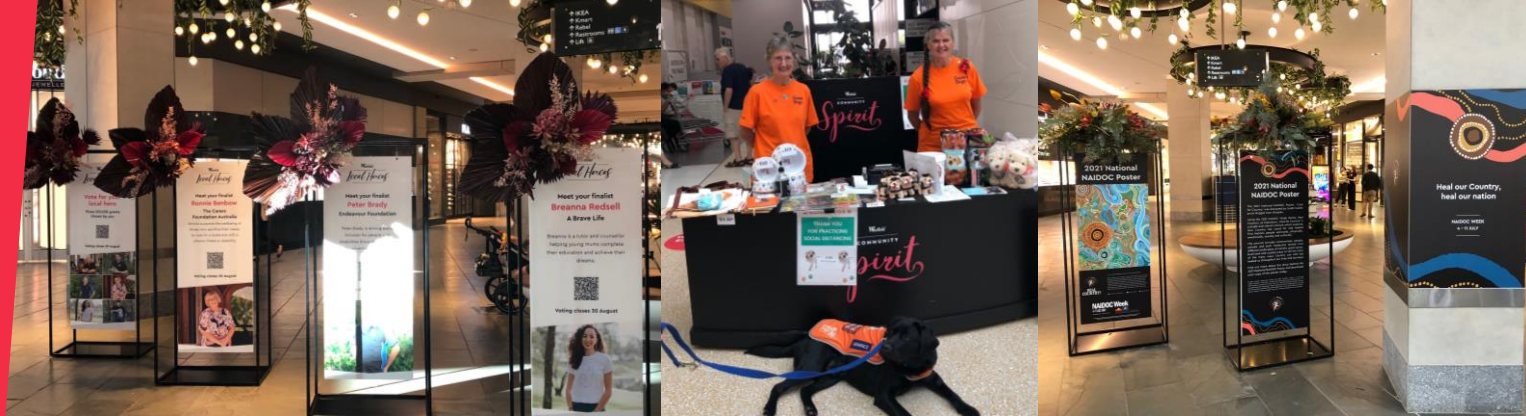
At **Westfield North Lakes** we share the community's vision for creating a thriving region where everyone can enjoy a vibrant lifestyle that is safe, inclusive and connected. We strive to be the heart of the community by creating a welcoming and safe space where people can come together.

We will focus on working with community organisations that help build community resilience and create opportunities for all, in particular, local youth and families.

## Want to know more, or get involved?

Email:  
[concierge.northlakes@scentregr.com](mailto:concierge.northlakes@scentregr.com)  
Phone: (07) 3491 9072

[Click here for our corporate Responsible Business Report](#)



## Our programs and activities

Our Westfield Living Centre creates meaningful human connections that help build thriving and inclusive communities. We do this by working directly with our community to 'discover, celebrate and contribute' to those things that are important and relevant. Our community and customers are at the heart of everything we do.

### Westfield Local Heroes

This program shines the spotlight on those people and organisations who drive positive impact for our community and environment. Westfield North Lakes has contributed \$120,000 in grants to our heroes and their organisations over 4 years.  
[www.westfield.com.au/local-heroes](http://www.westfield.com.au/local-heroes)

### Local Partnerships

To deliver meaningful initiatives that align with our community vision, we partner with many organisations. These include The Space (YMCA), QPS and Headspace Redcliffe, plus Westfield North Lakes Local Hero alumni.

### Community Activities

In 2022, we will deliver a variety of large and small local initiatives that will drive meaningful connections. These include cultural celebrations, monthly barbecue events for youth, charity drives and ongoing collaboration with the Queensland Police Service (QPS).

### Customer Wellbeing

As Westfield North Lakes is an essential social and community hub in our local area, we are committed to ensuring it is safe, welcoming and inclusive. We do this by working closely with local authorities and emergency services and driving positive customer experiences in everything we do.

### Sustainability

We are committed to reducing our carbon footprint and making it easier for our customers, retailers and staff to make environmentally conscious decisions. We have scout recycling bins in our food court dock and support our retailers to collect coffee grounds to be recycled into high-quality compost, diverting useful organic materials from ending up in landfill.

### Community Site

We provide a dedicated space at Westfield North Lakes near Chemist Warehouse for community-focused groups to connect with people in the local area. This site is available to not-for-profit sports clubs, community groups, charities and welfare organisations to raise awareness of their work or to fundraise.